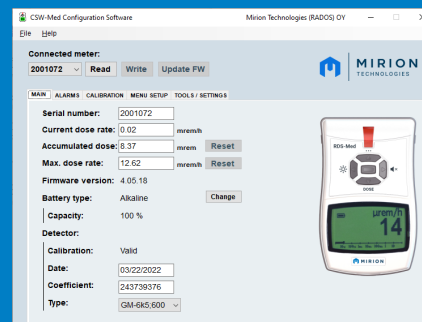




# RDS-Med™ Area Monitor Kit



## Real-Time Radiation Monitoring and Alert System



The RDS-Med Area Monitor Kit provides immediate and clear alerts for maintaining radiation safety standards in medical facilities.

Ideal for nuclear medicine, radiopharmacy, radiation therapy, and radiology departments, the Kit is designed to keep professionals and patients safe from potentially harmful exposure to ionizing radiation.

The versatile design allows for both a fixed installation – for reliable, continuous radiation monitoring – and for use as a portable survey meter.

A transparent cover offers an at-a-glance view of detector results on the meter.

### POWER SUPPLY AND BACKUP

Designed for continuous operation, the alarm box is powered by 85-240 VAC 50/60 Hz. Internal batteries are a backup power source, for uninterrupted monitoring and alerting in the event of power failure.

### FEATURES

- ✓ Fixed installation for continuous radiation monitoring
- ✓ Integrated survey meter can easily be removed for room surveys and contamination checks
- ✓ Includes Bluetooth® Low Energy communication capabilities
- ✓ Includes CSW-Med™ software for advanced and simplified configuration
- ✓ Easily expandable with external accessories and additional probes

# RDS-MED AREA MONITOR KIT



## MECHANICAL CHARACTERISTICS

- Casing EPDM and Polyurethane
- IP65 with protection caps for connectors (caps included)
- Transparent cover for meter's display and alarm
- Size: 235 x 185 x 119 mm (9.3 x 7.3 x 4.7 in.)

## ELECTRICAL CHARACTERISTICS

- Powered by 85-240 VAC, 50/60 Hz (included in the main housing, only power cord to connect to main).

## COMMUNICATION/DATA TRANSFER

- Bluetooth® communication is included with the RDS-Med detector to enable optional monitoring applications such as ConnectStudio™ supervisory software. ConnectStudio software must be ordered separately.

## INCLUDED IN THIS KIT

- 1233-300 Area Monitor Base Unit
- 1233-343 RDS-Med Area Detector and Survey Meter
- 1233-345 CSW-Med software for advanced configurations of the RDS-Med Survey Meter

## SYSTEM COMPONENTS

Simply connect the RDS-Med radiation survey meter

Base for optional signaling set on top

Connector for optional external probes

Power cord

CSW-Med Configuration Software

Mirion Technologies (RADOS) OY

Connected meter: 2001072

Read Write Update FW

Serial number: 2001072

Current dose rate: 0.02 mrem/h

Accumulated dose: 8.37 mrem

Max. dose rate: 12.62 mrem/h

Firmware version: 4.05.18

Battery type: Alkaline

Capacity: 100 %

Detector:

Calibration: Valid

Date: 03/22/2022

Coefficient: 243739376

Type: GM-6K5,600

CSW-Med software for advanced configurations of the RDS-Med Survey Meter

**Available Through Mirion Medical Companies: Capintec & Sun Nuclear**

Health Physics for Healthcare solutions enable radiation monitoring in healthcare applications – a critical aspect of safety and compliance for all facilities using radiation in patient diagnosis and care.



Copyright © 2024 Mirion Technologies, Inc. or its affiliates. All rights reserved. Mirion, the Mirion logo, and other trade names of Mirion products listed herein are registered trademarks or trademarks of Mirion Technologies, Inc. or its affiliates in the United States and other countries. Third party trademarks mentioned are the property of their respective owners.